

TM11-5895-833-34P-5
NAVLEX0967-LP-550-1120
T.O.31R5-2TSC54-114

**DIRECT SUPPORT AND GENERAL
SUPPORT MAINTENANCE
REPAIR PARTS AND SPECIAL
TOOLS LISTS
(INCLUDING DEPOT MAINTENANCE REPAIR
PARTS AND SPECIAL TOOLS)
FOR
TEST TRANSLATOR
(NSN 5895-01-017-7368)**

**DEPARTMENTS OF THE ARMY, THE NAVY, AND THE AIR FORCE
SEPTEMBER 1977**

TECHNICAL MANUAL
No. 11-5895-833-34P-5
TECHNICAL MANUAL
NAVELEX-0967-LP-550-1120
TECHNICAL ORDER
No. 31R5-2TSC54-114

**DEPARTMENTS OF THE ARMY,
THE NAVY, AND THE AIR FORCE**

WASHINGTON, DC 21 September 1977

**DIRECT SUPPORT AND GENERAL
SUPPORT MAINTENANCE
REPAIR PARTS AND SPECIAL
TOOLS LISTS
(INCLUDING DEPOT MAINTENANCE REPAIR
PARTS AND SPECIAL TOOLS)
FOR
TEST TRANSLATOR
Current as of 15 April 1977**

REPORTING OF ERRORS

You can improve this manual by recommending improvements using DA Form 2028-2(Test) located in the back of the manual. Simply tear out the self-addressed form, fill it out as shown on the sample, fold it where shown, and drop it in the mail.

If there are no blank DA Forms 2028-2(Test) in the back of your manual, use the standard DA Form 2028 (Recommended Changes to Publications and Blank Forms) and forward to Commander, US Army Electronics Command, ATTN: DRSEL-MA-Q, Fort Monmouth, NJ 07708.

For Air Force, use USAFLC Form 262 (Request for TO Revision or Change). Forward direct to prime ALC/MST.

For Navy, mail comments direct to: Commander, Naval Electronics Systems Command, Code 4908, Washington, DC 20380.

In either case, a reply will be furnished direct to you.

Table of Contents

Section I. Introduction

II. Repair parts list

Page ^{Illus}
Figure

I

- Group 03 Test translator
- 0310 Oscillator, radio frequency, phase locked
 - 0315 Cable assembly, radio frequency
 - 0320 Cable assembly, radio frequency
 - 0325 Cable assembly, radio frequency
 - 0330 Cable assembly, radio frequency
 - 0335 Oscillator, radio frequency, 5-MHz
 - 0340 Power supply
 - 0345 Wiring harness special purpose
 - 0350 Cable assembly, radio frequency
 - 0355 Mixer, stage, frequency
 - 0360 Attenuator, variable
 - 0365 Multiplier, frequency. 200 MHz
 - 0370 Cable assembly, radio frequency
 - 0375 Panel assembly, front
 - 0380 Circuit card assembly, radio frequency indicator calibrator
- Section III. Special tools list (Not applicable)
- IV. National stock number and part number index

SECTION I

INTRODUCTION

1. Scope

This manual lists repair parts required for performance of direct support and depot maintenance of the test translator.

2. General

This Repair Parts and Special Tools List is divided into the following sections:

a. Section II. Repair Parts List. A list of repair parts authorized for use in the performance of maintenance. The list also includes parts which must be removed for replacement of the authorized parts. Parts list are composed of functional groups in ascending numerical sequence, with the parts in each group listed in figure and item number sequence.

b. Section III. Special Tools List. Not applicable.

c. Section IV. National Stock number and Part Number Index. A list, in ascending numerical sequence, of all National stock numbers appearing in the listings, followed by a list, in alphanumeric sequence, of all part numbers appearing in the listings. National stock numbers and part numbers are cross-referenced to each illustration figure and item number appearance.

3. Explanation of Columns

The following provides an explanation of columns found in the tabular listings:

a. Illustration. This column is divided as follows:

(1) Figure number. Indicates the figure number of the illustration in which the item is shown.

(2) Item number. The number used to identify each item called out in the illustration.

b. Source, Maintenance, and Recoverability Codes (SMR).

(1) Source code. Source codes are assigned to support items to indicate the manner of acquiring support items for maintenance, repair, or overhaul of end items. Source codes are entered in the first and second positions of the Uniform SMR Code format as follows:

| Code | Definition |
|------|---|
| PA | Item procured and stocked for anticipated or known usage. |
| AF | Item to be assembled at direct support maintenance level. |
| XB | Item is not procured or stocked. If not available through salvage, requisition. |

NOTE

Cannibalization or salvage may be used as a source of supply for any items source-coded above, except those coded XA, XD, and aircraft support items as restricted by AR 700-42.

(2) Maintenance code. Maintenance codes are assigned to indicate the levels of maintenance authorized to USE and REPAIR support items. The maintenance codes are entered in the third and fourth positions of the Uniform SMR Code format as follows:

(a) The maintenance code entered in the third position will indicate the lowest maintenance level authorized to remove, replace, and use the support item. The maintenance code entered in the third position will indicate one of the following levels of maintenance:

| Code | Application/Explanation |
|------|--|
| O | Support item is removed, replaced, used at the organizational level. |
| F | Support item is removed, replaced, used at the direct support level. |
| D | Support items that are removed, replaced, used at depot, mobile depot, specialized repair activity only. |

(b) The maintenance code entered in the fourth position indicates whether the item is to be repaired and identifies the lowest maintenance level with the capability to perform complete repair (i.e., all authorized maintenance functions). This position will contain one of the following maintenance codes:

| Codes | Application/Explanation |
|-------|---|
| F | The lowest maintenance level capable of complete repair of the support item is the direct support level. |
| D | The lowest maintenance level capable of complete repair of the support item is the depot level, performed by depot. |
| Z | Nonreparable. No repair authorized. |

(3) Recoverability code. Recoverability codes are assigned to support items to indicate the disposition action on unserviceable items. The recoverability code is entered in the fifth position of the Uniform SMR Code format as follows:

| Recoverability Codes | Definition |
|----------------------|--|
| Z | Nonreparable item. When unserviceable, condemn and dispose at the level indicated in position 3. |

Recoverability

| Codes | Definition |
|--|---|
| F | Reparable item. When uneconomically reparable, condemn and dispose at the direct support level. |
| D | Reparable item. When beyond lower level repair capability, return to depot. Condemnation and disposal not authorized below depot level. |
| L | Reparable item. Repair, condemnation, and disposal not authorized below depot/specialized repair activity level. |
| c. National Stock Number. Indicates the national stock number assigned to the item and will be used for requisitioning purposes. | |
| d. Part Number. Indicates the primary number used by the manufacturer (individual, company, firm, corporation or Government activity), which controls the design and characteristics of the item by means of its engineering drawings, specification standards, and inspection requirements, to identify an item or range of items. | |

NOTE

When a stock-numbered item is requisitioned, the repair part received may have a different part number than the part being replaced.

e. **Federal Supply Code for Manufacturer (FSCM).** The FSCM is a 5-digit numeric code listed in SB 708-42 which is used to identify the manufacturer, distributor, or Government agency, etc.

f. **Description.** Indicates the Federal item name and, if required, a minimum description to identify the item.

g. **Unit of Measure.** Indicates the standards of the basic quantity of the listed item as used in performing the actual maintenance function. This measure is expressed by a two-character alphabetical abbreviation (e.g., ea, in, pr, etc.). When the unit of measure differs from the unit of issue, the lowest unit of issue that will satisfy the required units of measure will be requisitioned.

h. **Quantity, Incorporated in Unit.** Indicates the quantity of the item used in the breakout shown on the illustration figure, which is prepared for a functional group, subfunctional group, or an assembly. A "V" appearing in this column in lieu of a quantity indicates that no specific quantity is applicable.

4. Special Information

a. The following publications pertain to the test

translator and its components:

TM 11-5895-833-20P Frequency Conversion Subsystem

TM 11-5895-833-34P-1 Frequency Conversion Subsystem

b. Detailed assembly instructions for items source coded to be assembled or fabricated are found in TM 11-5895-833-34-5. Assembly components are listed immediately following the item to be assembled.

c. National stock numbers (NSN's) that are missing from P source-coded items have been applied for and will be added to this TM by future change/revision when they are entered in the Army Master Data File (AMDF). Until the NSN's are established and published, submit exception requisitions to: Commander, US Army Electronics Command, ATTN: DRSEL-MM, Fort Monmouth, NJ 07703 for the part required to support your equipment.

5. How to Locate Repair Parts

a. When National stock number or part number is unknown:

(1) *First.* Using the table of contents, determine the functional group within which the repair part belongs. This is necessary since illustrations are prepared for functional groups and listings are divided into the same groups.

(2) *Second.* Find the illustration covering the functional group to which the repair part belongs.

(3) *Third.* Identify the repair part on the illustration and note the illustration figure and item number of the repair part.

(4) *Fourth.* Using the Repair Parts Listing, find the figure and item number noted on the illustration.

b. When National stock number or part number is known:

(1) *First.* Using the Index of National Stock Numbers and Part Numbers, find the pertinent National stock number or part number. This index is in ascending NSN sequence, followed by a list of part numbers in ascending alphanumeric sequence, cross-referenced to the illustration figure number and item number.

(2) *Second.* After finding the figure and item number, locate the figure and item number in the repair parts list.

6. Abbreviations

(Not applicable)

(Next printed page 5.)

SECTION II. REPAIR PARTS LIST

| (1) ILLUSTRATION | | (2) SMR CODE | (3) NATIONAL STOCK NUMBER | (4) PART NUMBER | (5) PFCM | (6) DESCRIPTION | (7) UNIT OF MEAS | (8) QTY INC IN UNIT |
|--------------------------|--------------|--------------|---------------------------|-----------------|----------|---|------------------|---------------------|
| (A) FIG NO. | (B) ITEM NO. | | | | | | | |
| GROUP 03 TEST TRANSLATOR | | | | | | | | |
| 1 | 1 | PAFZZ | 5305-00-054-6654 | MS51957-30 | 96906 | SCREW, MACHINE | EA | 14 |
| 1 | 2 | PAFZZ | 5310-00-722-5998 | MS15795-805 | 96906 | WASHER, FLAT | EA | 37 |
| 1 | 3 | XBZZ | | SMC753213 | 80063 | COVER, ACCESS | EA | 1 |
| 1 | 4 | PAFZZ | | SMC753751 | 80063 | CABLE ASSEMBLY, RADIO FREQUENCY | EA | 1 |
| 1 | 5 | PAFZZ | 5310-00-934-9748 | MS35649-244 | 96906 | NUT, PLAIN, HEXAGON | EA | 18 |
| 1 | 6 | PAFZZ | 5310-00-933-8118 | MS35338-135 | 96906 | WASHER, LOCK | EA | 22 |
| 1 | 7 | PAFZZ | 5310-00-595-6211 | MS15795-803 | 96906 | WASHER, FLAT | EA | 16 |
| 1 | 8 | PAFZZ | 5305-00-400-8531 | MS51957-121 | 96906 | SCREW, MACHINE | EA | 4 |
| 1 | 9 | PAFZZ | 5985-00-199-0475 | A310H | 18203 | ATTENUATOR, FIXED | EA | 2 |
| 1 | 10 | PAFZZ | | A10297D | 12598 | SWITCH, RADIO FREQUENCY | EA | 2 |
| 1 | 11 | PAFZZ | 5310-00-934-9765 | MS35650-304 | 96906 | NUT, PLAIN, HEXAGON | EA | 6 |
| 1 | 12 | PAFZZ | 5310-00-933-8120 | MS35338-138 | 96906 | WASHER, LOCK | EA | 10 |
| 1 | 13 | PAFZZ | 5310-00-595-6772 | MS15795-808 | 96906 | WASHER, FLAT | EA | 22 |
| 1 | 14 | PAFZZ | 5940-00-918-8068 | SE26XF02 | 81349 | TERMINAL, FEED-THRU | EA | 1 |
| 1 | 15 | PAFZZ | | SHD753752 | 80063 | CABLE ASSEMBLY, RADIO FREQUENCY | EA | 1 |
| 1 | 16 | PAFZZ | 5995-01-017-9295 | SMC753750 | 80063 | CABLE ASSEMBLY, RADIO FREQUENCY | EA | 1 |
| 1 | 17 | PAFZZ | 5310-00-934-9761 | MS35649-264 | 96906 | NUT, PLAIN, HEXAGON | EA | 23 |
| 1 | 18 | PAFZZ | 5310-00-929-6295 | MS35338-136 | 96906 | WASHER, LOCK | EA | 27 |
| 1 | 19 | XBZZ | | SHD753609 | 80063 | RETAINER, OSCILLATOR | EA | 1 |
| 1 | 20 | PAFZZ | | 2056-0000-02 | 26805 | CONNECTOR, RECEPTACLE, ELECTRICAL | EA | 1 |
| 1 | 21 | PAFZZ | 5305-00-054-6651 | MS51957-27 | 96906 | SCREW, MACHINE | EA | 2 |
| 1 | 22 | PAFZZ | 5935-00-402-3648 | 168-001 | 29587 | SOCKET, PLUG-IN ELECTRONIC COMPONENTS | EA | 1 |
| 1 | 23 | PAFZZ | 5305-00-066-7327 | MS24693C28 | 96906 | SCREW, MACHINE | EA | 10 |
| 1 | 24 | XBZZ | | SHD754035 | 80063 | PIN, FLANGED, SHOCK | EA | 2 |
| 1 | 25 | PAFZZ | 5305-00-765-4252 | MS51959-42 | 96906 | SCREW, MACHINE | EA | 5 |
| 1 | 26 | PAFZZ | 5305-00-764-0071 | MS51959-47 | 96906 | SCREW, MACHINE | EA | 4 |
| 1 | 27 | PAFZZ | 5940-00-632-7234 | 600J | 75382 | LINK, TERMINAL, CONNECTING | EA | 3 |
| 1 | 28 | PAFZZ | 5305-00-054-5649 | MS51957-15 | 96906 | SCREW, MACHINE | EA | 4 |
| 1 | 29 | PAFDL | | M2164 | 12598 | MONITOR, RADIO FREQUENCY, 70 MHz | EA | 1 |
| 1 | 30 | PAFDL | | 233-1295 | 27802 | OSCILLATOR, RADIO FREQUENCY, 70 MHz | EA | 1 |
| 1 | 31 | PAFZZ | 5305-00-059-3660 | MS5198-64 | 96906 | SCREW, MACHINE | EA | 4 |
| 1 | 32 | PAFZZ | 5340-00-1270146 | Z111-1-02 | 71279 | HANDLE, BOM | EA | 2 |
| 1 | 33 | XBFFF | | SHD753638 | 80063 | PANEL ASSEMBLY, FRONT (SEE GROUP 0375 FOR PARTS) | EA | 1 |
| 1 | 34 | XBZZ | | SHD753761 | 80063 | SHIELDING GASKET, ELECTRONIC | EA | 1 |
| 1 | 35 | PAFZZ | | MS770066-1 | 96906 | TERMINAL, LUG | EA | 2 |
| 1 | 36 | PAFZZ | | M10523F | 97954 | CONNECTOR, RECEPTACLE, ELECTRICAL | EA | 1 |
| 1 | 37 | PAFDD | 5999-00-124-5265 | SHD753364 | 80063 | CIRCUIT CARD ASSEMBLY STATUS INDICATOR CALIBRATOR | EA | 1 |
| 1 | 38 | PAFZZ | 5305-00-054-5648 | MS51957-14 | 96906 | SCREW, MACHINE | EA | 2 |
| 1 | 39 | XBZZ | | SMC753608 | 80063 | COVER, HOUSING, CIRCUIT CARD | EA | 1 |
| 1 | 40 | PAFZZ | 5305-00-765-4344 | MS51959-36 | 96906 | SCREW, MACHINE | EA | 4 |

SECTION II. REPAIR PARTS LIST (CONTINUED)

| (1) ILLUSTRATION | | (2) SMR CODE | (3) NATIONAL STOCK NUMBER | (4) PART NUMBER | (5) FSCM | (6) DESCRIPTION USABLE ON CODE | (7) UNIT OF MEAS | (8) QTY INC IN UNIT |
|---------------------|--------------------|--------------------|------------------------------------|-----------------------|-------------|---|---------------------------|---------------------------------|
| (A) FIG NO. | (B) ITEM NO. | | | | | | | |
| 1 | 41 | XBFZZ | | 8219SS0632 | 06540 | POST, ELECTRICAL-MECHANICAL | EA | 4 |
| 1 | 42 | PAFZZ | 5940-00-816-6103 | MS77066-2 | 96906 | TERMINAL, LUG | EA | 1 |
| 1 | 43 | PAFZZ | | SMD753746 | 80063 | CABLE ASSEMBLY, RADIO FREQUENCY | EA | 1 |
| 1 | 44 | PAFZZ | 5995-01-017-9294 | SNC753749 | 80063 | CABLE ASSEMBLY, RADIO FREQUENCY | EA | 1 |
| 1 | 45 | PAFZZ | | ICXL16 | 14830 | CIRCULATOR, COAXIAL | EA | 1 |
| 1 | 46 | PAFZZ | 5935-00-306-0908 | 2087-0000 | 26805 | ADAPTER, CONNECTOR | EA | 1 |
| 1 | 47 | PAFZZ | 5305-00-763-6962 | MS51959-27 | 96906 | SCREW, MACHINE | EA | 3 |
| 1 | 48 | PAFZZ | 5305-00-054-5652 | MS51957-18 | 96906 | SCREW, MACHINE | EA | 4 |
| 1 | 49 | PAFZZ | 5305-00-763-6961 | MS51959-26 | 96906 | SCREW, MACHINE | EA | 4 |
| 1 | 50 | XBFZZ | | SMB753414 | 80063 | SPACER, PLATE | EA | 1 |
| 1 | 51 | PAFZZ | 5305-00-059-3557 | MS51958-61 | 96906 | SCREW, MACHINE | EA | 12 |
| 1 | 52 | PAFZZ | | 110QPP188 | 05236 | SLIDE, DRAWER, EXTENSION | EA | 2 |
| 1 | 53 | PAFZZ | | SNC753748 | 80063 | CABLE ASSEMBLY, RADIO FREQUENCY | EA | 1 |
| 1 | 54 | PAFZZ | | M2135 | 12598 | MONITOR, RADIO FREQUENCY, 5 MHz | EA | 1 |
| 1 | 55 | XBFZZ | | SMD753216 | 80063 | SHIELDING GASKET, ELECTRONIC | EA | 1 |
| 1 | 56 | XBDZZ | | SMD753401 | 80063 | CHASSIS, ELECTRICAL EQUIPMENT | EA | 1 |
| | | | | | | GROUP 0310 OSCILLATOR, RADIO FREQUENCY PHASE LOCKED | | |
| 1 | 57 | PAFDL | | 4840-00 | 31260 | OSCILLATOR, RADIO FREQUENCY PHASE LOCKED | EA | 1 |
| | | | | | | GROUP 0315 CABLE ASSEMBLY, RADIO FREQUENCY | | |
| 1 | 58 | AFFFF | | SMB754066 | 80063 | CABLE ASSEMBLY, RADIO FREQUENCY | EA | 1 |
| 1 | 59 | PAFZZ | 5935-01-009-2960 | 2031-7188-02 | 26805 | CONNECTOR, PLUG, ELECTRICAL | EA | 2 |
| 1 | 60 | PAFZZ | 6145-00-722-5932 | RG188U | 81349 | CABLE, RADIO FREQUENCY | FT | V |
| | | | | | | GROUP 0320 CABLE ASSEMBLY, RADIO FREQUENCY | | |
| 1 | 61 | AFFFF | | SMB754067 | 80063 | CABLE ASSEMBLY, RADIO FREQUENCY | EA | 1 |
| 1 | 62 | PAFZZ | 5935-01-009-2960 | 2031-7188-02 | 26805 | CONNECTOR, PLUG, ELECTRICAL | EA | 1 |
| 1 | 63 | PAFZZ | | 3034-7188-02 | 26805 | CONNECTOR, RECEPTACLE, ELECTRICAL | EA | 1 |
| 1 | 64 | PAFZZ | 6145-00-722-5932 | RG188U | 81349 | CABLE, RADIO FREQUENCY | FT | V |
| | | | | | | GROUP 0325 CABLE ASSEMBLY, RADIO FREQUENCY | | |
| 1 | 65 | AFFFF | | SMD754068 | 80063 | CABLE ASSEMBLY, RADIO FREQUENCY | EA | 1 |
| 1 | 66 | PAFZZ | 5935-00-845-2537 | MS3114E12-3P | 96906 | CONNECTOR, RECEPTACLE, ELECTRICAL | EA | 1 |
| 1 | 67 | PAFZZ | 5975-00-156-3253 | MS3367-2-9 | 96906 | STRAP, TIEDOWN | EA | 4 |
| 1 | 68 | PAFZZ | 5975-00-482-3954 | MS3368-5-9E | 96906 | STRAP, TIEDOWN | EA | 1 |
| 1 | 69 | PAFZZ | 5975-01-017-2738 | MS3368-2-9B | 96906 | STRAP, TIEDOWN | EA | 1 |
| 1 | 70 | PAFZZ | 5940-00-204-8966 | MS25036-102 | 96906 | TERMINAL, LUG | EA | 3 |
| | | | | | | GROUP 0330 CABLE ASSEMBLY, RADIO FREQUENCY | | |
| 1 | 71 | AFFFF | | SMB754064 | 80063 | CABLE ASSEMBLY, RADIO FREQUENCY | EA | 1 |
| 1 | 72 | PAFZZ | 5935-01-009-2960 | 2031-7177-02 | 26805 | CONNECTOR, PLUG, ELECTRICAL | EA | 1 |
| 1 | 73 | PAFZZ | | 3034-7188-02 | 26805 | CONNECTOR, RECEPTACLE, ELECTRICAL | EA | 1 |
| 1 | 74 | PAFZZ | 6145-00-722-5932 | RG188U | 81349 | CABLE, RADIO FREQUENCY | FT | V |

SECTION II. REPAIR PARTS LIST (CONTINUED)

| (1) ILLUSTRATION | | (2) SMR CODE | (3) NATIONAL STOCK NUMBER | (4) PART NUMBER | (5) FSCM | (6) DESCRIPTION | (7) UNIT OF MEAS | (8) QTY INC IN UNIT |
|---------------------|--------------------|--------------------|------------------------------------|-----------------------|-------------|---|---------------------------|---------------------------------|
| (A) FIG NO. | (B) ITEM NO. | USABLE ON CODE | | | | | | |
| 1 | 75 | PAFDL | | D13130-3890 | 14844 | GROUP 0335 OSCILLATOR, RADIO FREQUENCY, 5-MHz OSCILLATOR, RADIO FREQUENCY, 5-MHz | EA | 1 |
| 1 | 76 | PAFDL | | FR1426 | 33441 | GROUP: 0340 POWER SUPPLY POWER SUPPLY | EA | 1 |
| 1 | 77 | AFFFF | | SND754069 | 80063 | GROUP 0345 WIRING HARNESS, SPECIAL PURPOSE WIRING HARNESS, SPECIAL PURPOSE | EA | 1 |
| 1 | 78 | PAFZZ | 5975-00-570-9598 | MS3367-7-9 | 96906 | STRAP, TIEDOWN | EA | 50 |
| 1 | 79 | PAFZZ | 5975-00-482-3954 | MS3368-5-9E | 96906 | STRAP, TIEDOWN | EA | 1 |
| 1 | 80 | PAFZZ | 6145-00-722-5932 | RG188U | 81349 | CABLE, RADIO FREQUENCY | FT | V |
| 1 | 81 | PAFZZ | | MS25036-2 | 96906 | TERMINAL, LUG | EA | 7 |
| 1 | 82 | PAFZZ | 5975-00-611-8072 | MS3368-5-9B | 96906 | STRAP, TIEDOWN | EA | 1 |
| 1 | 83 | AFFFF | | SMB754063 | 80063 | GROUP 0350 CABLE ASSEMBLY, RADIO FREQUENCY CABLE ASSEMBLY, RADIO FREQUENCY | EA | 1 |
| 1 | 84 | PAFZZ | 5935-01-009-2960 | 2031-7188-02 | 26805 | CONNECTOR, PLUG, ELECTRICAL | EA | 1 |
| 1 | 85 | PAFZZ | | 3034-7188-02 | 26805 | CONNECTOR, RECEPTACLE, ELECTRICAL | EA | 1 |
| 1 | 86 | PAFZZ | 6145-00-722-5932 | RG188U | 81349 | CABLE, RADIO FREQUENCY | FT | V |
| 1 | 87 | PAFDL | | 1130000083 | 31196 | GROUP 0355 MIXER, STAGE, FREQUENCY MIXER, STAGE, FREQUENCY | EA | 1 |
| 1 | 88 | PAFZZ | | AR3122 | 09992 | GROUP 0360 ATTENUATOR, VARIABLE ATTENUATOR, VARIABLE | EA | 1 |
| 1 | 89 | PAFDD | | 5106-00 | 31260 | GROUP 0365 MULTIPLIER, FREQUENCY 200-MHz MULTIPLIER, FREQUENCY 200-MHz | EA | 1 |
| 1 | 90 | AFFFF | | SMB754065 | 80063 | GROUP 0370 CABLE ASSEMBLY, RADIO FREQUENCY CABLE ASSEMBLY, RADIO FREQUENCY | EA | 1 |
| 1 | 91 | PAFZZ | 5935-01-009-2960 | 2031-7188-02 | 26805 | CONNECTOR, PLUG, ELECTRICAL | EA | 2 |
| 1 | 92 | PAFZZ | 6145-00-722-5932 | RG188U | 81349 | CABLE, RADIO FREQUENCY | FT | V |
| 2 | 1 | PAQZZ | 6240-00000-155-7836 | MS25237-327 | 96906 | GROUP 0375 PANEL ASSEMBLY, FRONT LAMP, INCANDESCENT | EA | 3 |
| 2 | 2 | PAFZZ | 6210-00-892-4468 | 812-1030-0975-50 | 72619 | LAMPHOLDER | EA | 3 |
| 2 | 3 | PAFZZ | 5930-00-244-7643 | 2TW1-3 | 91929 | SWITCH, TOGGLE | EA | 1 |
| 2 | 4 | PAQZZ | 5355-00-680-1357 | MS91528-1F2B | 96906 | KNOB, CONTROL, PLASTIC | EA | 1 |
| 2 | 5 | PAFZZ | | 6-17351-411 | 76854 | SWITCH, ROTARY | EA | 1 |
| 2 | 6 | PAFZZ | 5940-00-959-4487 | 2440-20-03 | 78189 | TERMINAL, LUG | EA | 1 |
| 2 | 7 | PAFZZ | | 1TW7-3 | 91929 | SWITCH, TOGGLE | EA | 2 |
| 2 | 8 | PAFZZ | 6625-00-326-0334 | 621 | 77221 | METER, SPECIAL SCALE | EA | 1 |
| 2 | 9 | PAFZZ | | SND753600-1 | 80063 | SHIELD, CIRCUIT BREAKER | EA | 1 |
| 2 | 10 | PAFZZ | 5925-00-406-6115 | MS39019-4-3B | 81349 | CIRCUIT BREAKER | EA | 1 |
| 2 | 11 | PAFZZ | 5310-00-934-9748 | MS35649-244 | 96906 | NUT, PLAIN, HEXAGON | EA | 4 |
| 2 | 12 | PAFZZ | 5310-00-933-8118 | MS35338-135 | 96906 | WASHER, LOCK | EA | 4 |

SECTION II. REPAIR PARTS LIST (CONTINUED)

| (1) ILLUSTRATION | | (2) SMR CODE | (3) NATIONAL STOCK NUMBER | (4) PART NUMBER | (5) FSCM | (6) DESCRIPTION | (7) UNIT OF MEAS | (8) QTY INC IN UNIT |
|---------------------|--------------------|--------------------|------------------------------------|-----------------------|-------------|---|---------------------------|---------------------------------|
| (A) FIG NO. | (B) ITEM NO. | | | | | USABLE ON CODE | | |
| 2 | 13 | PAFZZ | 5310-00-782-1349 | NS15795-804 | 96906 | WASHER, FLAT | EA | 4 |
| 2 | 14 | XBZZ | | SHD753863 | 80063 | COVER, ACCESS | EA | 1 |
| 2 | 15 | XBZZ | | 6141SS1032 | 06540 | SCREW, EXTERNALLY RELIEVED BODY | EA | 4 |
| 2 | 16 | PAFZZ | 3120-00-918-4708 | 6280SS1032 | 06540 | RETAINER, EXTERNALLY RELIEVED BODY | EA | 4 |
| | | | | | | GROUP 0380 STATUS INDICATOR CALIBRATOR CIRCUIT CARD ASSEMBLY | | |
| 3 | 1 | PAZZZ | 5905-00-483-4284 | RJ12CY103 | 81349 | RESISTOR, VARIABLE | EA | 7 |
| 3 | 2 | PAZZZ | 5905-00-432-0126 | RJ12CY503 | 81349 | RESISTOR, VARIABLE | EA | 1 |
| 3 | 3 | PAZZZ | 5905-00-126-6683 | RCR076332JS | 81349 | RESISTOR, FIXED, COMPOSITION | EA | 2 |
| 3 | 4 | PAZZZ | 5905-00-435-6414 | RCR076114JS | 81349 | RESISTOR, FIXED, COMPOSITION | EA | 1 |
| 3 | 5 | PAZZZ | 5905-00-105-7767 | RCR076474JS | 81349 | RESISTOR, FIXED, COMPOSITION | EA | 2 |
| 3 | 6 | PAFZZ | 5310-00-934-9748 | NS35649-244 | 96906 | NUT, FLAIN, HEXAGON | EA | 2 |
| 3 | 7 | PAFZZ | 5310-00-933-8118 | NS35338-135 | 96906 | WASHER, LOCK | EA | 2 |
| 3 | 8 | PAFZZ | 5310-00-595-6211 | NS15795-803 | 96906 | WASHER, FLAT | EA | 2 |
| 3 | 9 | PAZZZ | 5935-01-006-7791 | K16S23WB | 97954 | CONNECTOR, PLUG, ELECTRICAL | EA | 1 |
| 3 | 10 | PAZZZ | 5905-00-110-7620 | RCR076102JS | 81349 | RESISTOR, FIXED, COMPOSITION | EA | 1 |
| 3 | 11 | PAZZZ | 5905-00-106-3666 | RCR076103JS | 81349 | RESISTOR, FIXED, COMPOSITION | EA | 1 |
| 3 | 12 | XBZZ | | SHD753305 | 80063 | PRINTED WIRING BOARD | EA | 1 |

SECTION IV. NATIONAL STOCK NUMBER AND PART NUMBER INDEX

| STOCK NUMBER | FIG. NO. | ITEM NO. | STOCK NUMBER | FIG. NO. | ITEM NO. |
|------------------|----------|----------|------------------|----------|----------|
| 3120-00-918-4708 | 2 | 16 | 5975-00-156-3253 | 1 | 67 |
| 5305-00-054-5648 | 1 | 38 | 5975-00-482-3954 | 1 | 68 |
| 5305-00-654-5649 | 1 | 28 | 5975-00-482-3954 | 1 | 79 |
| 5305-00-054-5652 | 1 | 48 | 5975-00-570-9598 | 1 | 78 |
| 5305-00-054-6651 | 1 | 21 | 5975-00-611-8072 | 1 | 82 |
| 5305-00-054-6654 | 1 | 1 | 5975-01-017-2738 | 1 | 69 |
| 5305-00-059-3657 | 1 | 51 | 5985-00-199-0475 | 1 | 9 |
| 5305-00-059-3660 | 1 | 31 | 5995-01-017-9294 | 1 | 44 |
| 5305-00-066-7327 | 1 | 23 | 5995-01-017-9295 | 1 | 16 |
| 5305-00-489-8531 | 1 | 8 | | 1 | 37 |
| 5305-00-763-6961 | 1 | 49 | 6145-00-722-5932 | 1 | 60 |
| 5305-00-763-6962 | 1 | 47 | 6145-00-722-5932 | 1 | 64 |
| 5305-00-764-0071 | 1 | 26 | 6145-00-722-5932 | 1 | 74 |
| 5305-00-765-4252 | 1 | 25 | 6145-00-722-5932 | 1 | 80 |
| 5305-00-765-4344 | 1 | 40 | 6145-00-722-5932 | 1 | 86 |
| 5310-00-595-6211 | 1 | 7 | 6145-00-722-5932 | 1 | 92 |
| 5310-00-595-6211 | 3 | 8 | 6210-00-892-4468 | 2 | 2 |
| 5310-00-595-6772 | 1 | 13 | 6240-00-155-7836 | 2 | 1 |
| 5310-00-722-5998 | 1 | 2 | 6625-00-326-0334 | 2 | 8 |
| 5310-00-782-1349 | 2 | 13 | | | |
| 5310-00-929-6395 | 1 | 18 | | | |
| 5310-00-933-8118 | 1 | 6 | | | |
| 5310-00-933-8118 | 2 | 12 | | | |
| 5310-00-933-8118 | 3 | 7 | | | |
| 5310-00-933-8120 | 1 | 12 | | | |
| 5310-00-934-9748 | 1 | 5 | | | |
| 5310-00-934-9748 | 2 | 11 | | | |
| 5310-00-934-9748 | 3 | 6 | | | |
| 5310-00-934-9761 | 1 | 17 | | | |
| 5310-00-934-9765 | 1 | 11 | | | |
| 5340-00-127-0146 | 1 | 32 | | | |
| 5355-00-680-1357 | 2 | 4 | | | |
| 5905-00-105-7767 | 3 | 5 | | | |
| 5905-00-106-3666 | 3 | 11 | | | |
| 5905-00-110-7620 | 3 | 10 | | | |
| 5905-00-126-6683 | 3 | 3 | | | |
| 5905-00-432-0126 | 3 | 2 | | | |
| 5905-00-435-6414 | 3 | 4 | | | |
| 5905-00-483-4284 | 3 | 1 | | | |
| 5925-00-406-6115 | 2 | 10 | | | |
| 5930-00-244-7643 | 2 | 3 | | | |
| 5935-00-306-0908 | 1 | 46 | | | |
| 5935-00-402-3648 | 1 | 22 | | | |
| 5935-00-845-2537 | 1 | 66 | | | |
| 5935-01-006-7791 | 3 | 9 | | | |
| 5935-01-009-2960 | 1 | 59 | | | |
| 5935-01-009-2960 | 1 | 62 | | | |
| 5935-01-009-2960 | 1 | 72 | | | |
| 5935-01-009-2960 | 1 | 84 | | | |
| 5935-01-009-2960 | 1 | 91 | | | |
| 5940-00-204-8966 | 1 | 70 | | | |
| 5940-632-7234 | 1 | 70 | | | |
| 5940-00-816-6103 | 1 | 27 | | | |
| 5940-00-918-8068 | 1 | 42 | | | |
| 5940-00-959-4487 | 2 | 14 | | | |
| | | 6 | | | |

SECTION IV. NATIONAL STOCK NUMBER AND PART NUMBER INDEX (CONTINUED)

| PART NUMBER | FSCM | FIG. NO. | ITEM NO. | PART NUMBER | FSCM | FIG. NO. | ITEM NO. |
|--------------|-------|----------|----------|---------------|-------|----------|----------|
| AR3122 | 09992 | 1 | 88 | RCR07G114JS | 81349 | 3 | 4 |
| A310M | 18203 | 1 | 9 | RCR07G332JS | 81349 | 3 | 2 |
| A10297D | 12598 | 1 | 10 | RCR07G474JS | 81349 | 3 | 5 |
| D13130-3890 | 14844 | 1 | 75 | RG188U | 81349 | 1 | 60 |
| FR 1 4 2 6 | 33441 | 1 | 76 | RG188U | 81349 | 1 | 64 |
| ICXL16 | 14830 | 1 | 45 | RG188U | 81349 | 1 | 74 |
| MIGS23F | 97954 | 1 | 36 | RG188U | 81349 | 1 | 80 |
| MIGS23MB | 97954 | 3 | 9 | RG188U | 81349 | 1 | 86 |
| MS15795-803 | 96906 | 1 | 7 | RG188U | 81349 | 1 | 92 |
| MS15795-803 | 96906 | 3 | 8 | RJ12CY103 | 81349 | 3 | 1 |
| MS15795-804 | 96906 | 2 | 13 | RJ12CY503 | 81349 | 3 | 2 |
| 15795-805 | 96906 | 1 | 2 | SE26XF02 | 81349 | 1 | 14 |
| MS15795-808 | 96906 | 1 | 13 | SMB753414 | 80063 | 1 | 50 |
| MS24693C28 | 96906 | 1 | 23 | SMB753609 | 80063 | 1 | 19 |
| MS25036-2 | 96906 | 1 | 81 | SMB753690-1 | 80063 | 2 | 9 |
| MS25036-102 | 96906 | 1 | 70 | SMB753853 | 80063 | 2 | 14 |
| MS25237-327 | 96906 | 2 | 1 | SMB754035 | 80063 | 1 | 24 |
| MS3114E12-3P | 96906 | 1 | 66 | SMB754063 | 80063 | 1 | 83 |
| MS3367-2-9 | 96906 | 1 | 67 | SMB754064 | 80063 | 1 | 71 |
| MS3367-7-9 | 96906 | 1 | 78 | SMB754065 | 80063 | 1 | 90 |
| MS3368-2-9B | 96906 | 1 | 69 | SMB754066 | 80063 | 1 | 58 |
| MS3368-5-9B | 96906 | 1 | 82 | SMB754067 | 80063 | 1 | 61 |
| MS3368-5-9E | 96906 | 1 | 68 | SMC753213 | 80063 | 1 | 3 |
| MS3368-5-9E | 96906 | 1 | 79 | SMC753608 | 80063 | 1 | 39 |
| MS35338-135 | 96906 | 1 | 6 | SMC753748 | 80063 | 1 | 53 |
| MS35338-135 | 96906 | 2 | 12 | SMC753749 | 80063 | 1 | 44 |
| MS35338-135t | 96906 | 3 | 7 | SMC753750 | 80063 | 1 | 16 |
| MS35338-136 | 96906 | 1 | 18 | SMC753751 | 80063 | 1 | 4 |
| MS35338-138 | 96906 | 1 | 12 | SMD753216 | 80063 | 1 | 55 |
| MS35649-244 | 96906 | 1 | 5 | SMD753305 | 80063 | 3 | 12 |
| MS35649-244 | 96906 | 2 | 11 | SMD753364 | 80063 | 1 | 37 |
| MS35649-244 | 96906 | 3 | 6 | SMD753401 | 80063 | 1 | 56 |
| MS35649-264 | 96906 | 1 | 17 | SMD753538t | 80063 | 1 | 33 |
| MS35650-304 | 96906 | 1 | 11 | SMD753746 | 80063 | 1 | 43 |
| MS39019-4-38 | 81349 | 2 | 10 | SMD753752 | 80063 | 1 | 15 |
| MS51957-14xt | 96906 | 1 | 38 | TextSMD753761 | 80063 | 1 | 34 |
| MS51957-15 | 96906 | 1 | 28 | SMD754068 | 80063 | 1 | 65 |
| MS51957-18 | 96906 | 1 | 48 | SMD754069 | 80063 | 1 | 77 |
| MS51957-27 | 96906 | 1 | 21 | TextTW7-3 | 91929 | 2 | 7 |
| MS51957-30 | 96906 | 1 | 1 | 2TW1-3 | 91929 | 2 | 3 |
| MS51957-121 | 96906 | 1 | 8 | 110QPP18B | 05236 | 1 | 52 |
| MS51958-61 | 96906 | 1 | 51 | 600J | 75382 | 1 | 27 |
| MS51959-26 | 96906 | 1 | 49 | 621 | 77221 | 2 | 8 |
| MS51959-27 | 96906 | 1 | 47 | 6141SS1032 | 06540 | 2 | 15 |
| MS51959-36 | 96906 | 1 | 40 | 6284DSS1032 | 06540 | 2 | 16 |
| MS51959-42 | 96906 | 1 | 25 | 8219SS0632 | 06540 | 1 | 41 |
| MS51957-47 | 96906 | 1 | 26 | 168-001 | 29587 | 1 | 22 |
| MS5198-64 | 96906 | 1 | 31 | 4840-00 | 31260 | 1 | 57 |
| MS770066-1 | 96906 | 1 | 35 | 5106-00 | 31260 | 1 | 89 |
| MS77066-2 | 96906 | 1 | 42 | 2111-1-02 | 71279 | 1 | 32 |
| MS91528-1F2B | 96906 | 2 | 4 | 233-1295 | 27802 | 1 | 30 |
| M2135 | 12598 | 1 | 54 | 2087-0000 | 26805 | 1 | 46 |
| M2164 | 12598 | 1 | 29 | 2440-20-03 | 78189 | 2 | 6 |
| RCR07G102JSx | 81349 | 3 | 10 | 6-17351-411 | 76854 | 2 | 5 |
| RCR07G103JS | 81349 | 3 | 11 | 1130000083 | 31196 | 1 | 87 |

SECTION IV. NATIONAL STOCK NUMBER AND PART NUMBER INDEX (CONTINUED)

| PART NUMBER | FSCM | FIG. NO. | ITEM NO. | PART NUMBER | FSCM | FIG. NO. | ITEM NO. |
|------------------|-------|----------|----------|-------------|------|----------|----------|
| | 26805 | 1 | 72 | | | | |
| 2031-7188-02 | 26805 | 1 | 59 | | | | |
| 2031-7188-02 | 26805 | 1 | 62 | | | | |
| | 26805 | 1 | 84 | | | | |
| 2031-7188-02 | 26805 | 1 | 91 | | | | |
| 2031-7188-02 | 26805 | 1 | 20 | | | | |
| 3034-7188-02 | 26805 | 1 | 63 | | | | |
| | 26805 | 1 | 73 | | | | |
| 3034-7188-02 | 26805 | 1 | 85 | | | | |
| 812-1030-0975-50 | 72619 | 2 | 2 | | | | |



SOMETHING WRONG WITH THIS MANUAL?

THEN... JOT DOWN THE DOPE ABOUT IT ON THIS FORM, TEAR IT OUT, FOLD IT AND DROP IT IN THE MAIL!

FROM: (YOUR UNIT'S COMPLETE ADDRESS)

Commander
Stateside Army Depot
ATTN: AMSTA-US
Stateside, N.J. 07703

DATE 10 July 1975

PUBLICATION NUMBER

TM 11-5840-340-12

DATE

23 Jan 74

TITLE

Radar Set AN/SPC-76

BE EXACT... PIN-POINT WHERE IT IS

| PAGE NO. | PARA-GRAPH | FIGURE NO. | TABLE NO. |
|----------|------------|------------|-----------|
| 2-25 | 2-28 | | |
| 3-10 | 3-3 | | 3-1 |
| 5-6 | 5-8 | | |

IN THIS SPACE TELL WHAT IS WRONG AND WHAT SHOULD BE DONE ABOUT IT:

Recommend that the installation antenna alignment procedure be changed through to specify a 2° IFF antenna lag rather than 1°.

REASON: Experience has shown that with only a 1° lag, the antenna servo system is too sensitive to wind gusting in excess of 7 knots, and has a tendency to rapidly accelerate and decelerate as it hunts, causing strain to the drive train. Hunting is minimized by adjusting the lag to 2° without degradation of operation.

Item 5, Function column. Change "2 db" to "3db."

REASON: The adjustment procedure for the TRANS POWER FAULT indicator calls for a 3 db (500 watts) adjustment to light the TRANS POWER FAULT indicator.

Add new step f.1 to read, "Replace cover plate removed in step e.1, above."

REASON: To replace the cover plate.

Zone C 3. On J1-2, change "+24 VDC to "+5 VDC."

REASON: This is the output line of the 5 VDC power supply. + 24 VDC is the input voltage.

TEAR ALONG DOTTED LINE

TYPED NAME, GRADE OR TITLE, AND TELEPHONE NUMBER

SSG I. M. DeSpirito 999-1776

SIGN HERE:

SSG I. M. DeSpirito

DA FORM 2028-2 (TEST)

P.S.--IF YOUR OUTFIT WANTS TO KNOW ABOUT YOUR MANUAL "FIND" MAKE A CARBON COPY OF THIS AND GIVE IT TO YOUR HEADQUARTERS.

HISA 1686-75

FILL IN YOUR
UNIT'S ADDRESS

FOLD BACK

DEPARTMENT OF THE ARMY

OFFICIAL BUSINESS
PENALTY FOR PRIVATE USE, \$300

POSTAGE AND FEE PAID
DEPARTMENT OF THE ARMY
DOD-014



Commander
US Army Electronics Command
ATTN: DRSEL-MA-Q
Fort Monmouth, New Jersey 07703

TEAR ALONG DOTTED LINE

FOLD BACK

REVERSE OF DA FORM 2025-2 (TEST)

FILL IN YOUR
UNIT'S ADDRESS

FOLD BACK

DEPARTMENT OF THE ARMY

OFFICIAL BUSINESS
PENALTY FOR PRIVATE USE, \$300

POSTAGE AND FEES PAID
DEPARTMENT OF THE ARMY
DOD-314



Commander
US Army Electronics Command
ATTN: DRSEL-MA-Q
Fort Monmouth, New Jersey 07703

TEAR ALONG DOTTED LINE

FOLD BACK

REVERSE OF DA FORM 2025-2 (TEST)



SOMETHING WRONG WITH THIS MANUAL?

THEN... JOT DOWN THE DOPE ABOUT IT ON THIS FORM, TEAR IT OUT, FOLD IT AND DROP IT IN THE MAIL!

FROM: (YOUR UNIT'S COMPLETE ADDRESS)

DATE

PUBLICATION NUMBER

DATE

TITLE

BE EXACT... PIN-POINT WHERE IT IS

IN THIS SPACE TELL WHAT IS WRONG AND WHAT SHOULD BE DONE ABOUT IT:

| PAGE NO. | PARA-GRAPH | FIGURE NO. | TABLE NO. |
|----------|------------|------------|-----------|
|----------|------------|------------|-----------|

TEAR ALONG DOTTED LINE

TYPED NAME, GRADE OR TITLE, AND TELEPHONE NUMBER

SIGN HERE:

FILL IN YOUR
UNIT'S ADDRESS

FOLD BACK

DEPARTMENT OF THE ARMY

OFFICIAL BUSINESS

PENALTY FOR PRIVATE USE, \$300

POSTAGE AND FEES PAID
DEPARTMENT OF THE ARMY
DOD-314



Commander
US Army Electronics Command
ATTN: DRSEL-MA-Q
Fort Monmouth, New Jersey 07703

TEAR ALONG DOTTED LINE

FOLD BACK

REVERSE OF DA FORM 2025-2 (TEST)

By Order of the Secretaries of the Army, the Navy, and the Air Force:

Official:

J.C. PENNINGTON
Brigadier General, United States Army
The Adjutant General

BERNARD W. ROGERS
General, United States Army
Chief of Staff

Official:

F. M. ROGERS, General, USAF
Commander, Air Force Logistics Command

EARL B. FOWLER
Rear Admiral, United States Navy
Commander, Naval Electronic
Systems Command

DAVID C. JONES, General, USAF
Chief of Staff

Distribution:

Active Army:

USASA (2)
COE (1)
TSG (1)
USAARENBD (1)
DARCOM (1)
TRADOC (2)
OS Maj Cmd (4)
TECOM (2)
USACC (4)
MDW (1)
Armies (2)
Corps (2)
HISA (Ft. Monmouth) (33)
Svc Colleges (1)
USASIGS (5)
USAADS (2)
USAFAS (2)
USAARMS (2)

USAIS (2)
USAES (2)
USAICS (3)
MAAG (1)
USARMIS (1)
USAERDAA (1)
USAERDAW (1)
Instls (2) except
Ft Gordon (10)
Ft Huachuca (10)
Ft Carson (5)
Ft Richardson (ECOM Ofc) (2)
LBAD (14)
SAAD (30)
TOAD (14)
SHAD (3)
Ft Gillem (10)
Sig FLDMS (1)

NG: None

USAR: None

For explanation of abbreviations, used see AR 310-50.

DEPARTMENT OF THE ARMY
AN ARMY AIR PUBLICATION CENTER
1222 GIBSON ROAD
ST. LOUIS, MISSOURI 63114

OFFICIAL BUSINESS
PENALTY FOR PRIVATE USE \$300

POSTAGE AND FEES PAID
DEPARTMENT OF THE ARMY
GPO 314



END

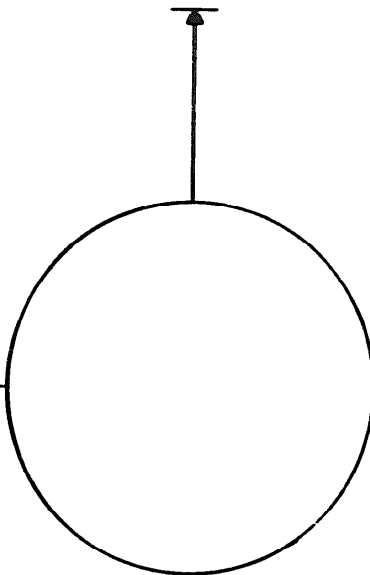
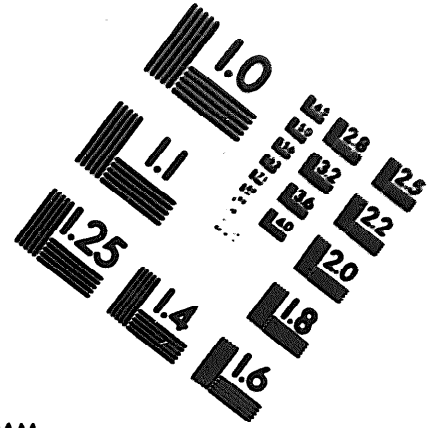
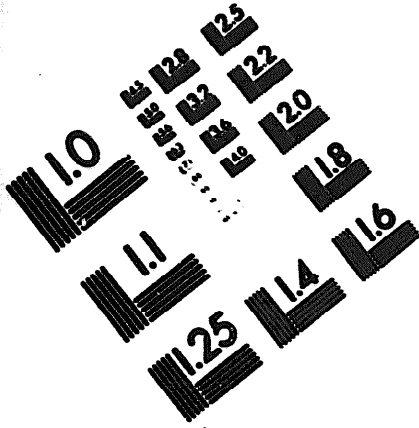
03-04-83

DATE





DEPARTMENT OF THE ARMY
MICROFORM
TEST TARGET



1.0 mm (e= .81 mm)

ABCDEFGHIJKLMN OPQRSTUVWXYZ 1234567890
abcdefghijklmnopqrstuvwxyz \$%& /%# 1/2 1/4 3/4 —+ x&@*

1.5 mm (e= 1.09 mm)

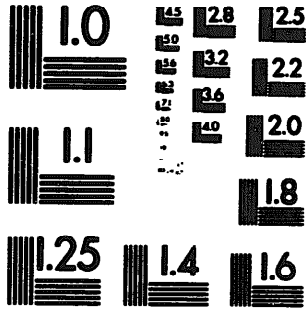
ABCDEFGHIJKLMN OPQRSTUVWXYZ 1234567890
abcdefghijklmnopqrstuvwxyz \$%& /%# 1/2 1/4 3/4 —+ x&@*

2.0 mm (e= 1.37 mm)

ABCDEFGHIJKLMN OPQRSTUVWXYZ
abcdefghijklmnopqrstuvwxyz
1234567890 \$%& /%# 1/2 1/4 3/4 —+ x&@*

2.5 mm (e= 1.77 mm)

ABCDEFGHIJKLMN OPQRSTUVWXYZ
abcdefghijklmnopqrstuvwxyz
1234567890 \$%& /%# 1/2 1/4 3/4 —+ x&@*



1.0 mm (e= .81 mm)

ABCDEFGHIJKLMN OPQRSTUVWXYZ 1234567890
abcdefghijklmnopqrstuvwxyz \$%& /%# 1/2 1/4 3/4 —+ x&@*

1.5 mm (e= 1.09 mm)

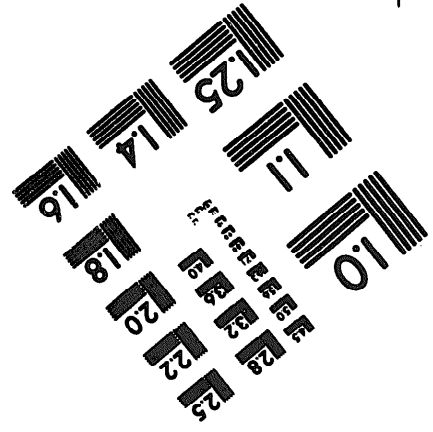
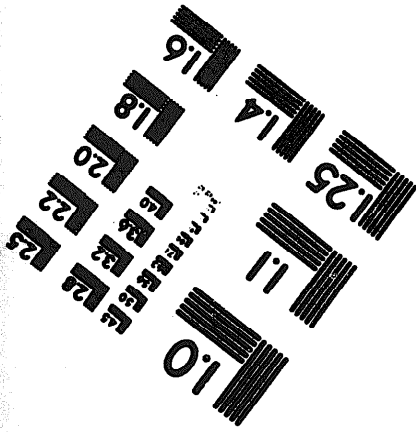
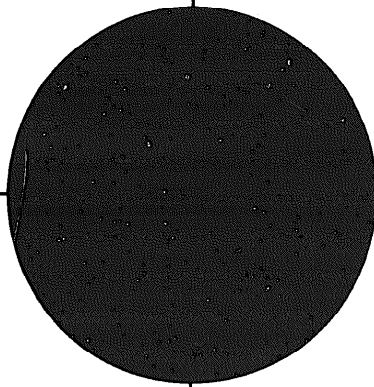
ABCDEFGHIJKLMN OPQRSTUVWXYZ 1234567890
abcdefghijklmnopqrstuvwxyz \$%& /%# 1/2 1/4 3/4 —+ x&@*

2.0 mm (e= 1.37 mm)

ABCDEFGHIJKLMN OPQRSTUVWXYZ
abcdefghijklmnopqrstuvwxyz
1234567890 \$%& /%# 1/2 1/4 3/4 —+ x&@*

2.5 mm (e= 1.77 mm)

ABCDEFGHIJKLMN OPQRSTUVWXYZ
abcdefghijklmnopqrstuvwxyz
1234567890 \$%& /%# 1/2 1/4 3/4 —+ x&@*



250 MM

CHANGE }
No. 1 }

DEPARTMENTS OF THE ARMY
THE NAVY, AND THE AIR FORCE
WASHINGTON, DC, 5 September 1978

Direct Support and General Support Maintenance
Repair Parts and Special Tools Lists
(Including Dspot Maintenance Repair Parts and Special Tools)
For

TEST TRANSLATOR
(NSN 5895-01-017-7368)

TM 11-5895-833-34P-5, NAVELEX 0967-LP-550-1120/TO 31R5-2TSC54-114, 21 September 1977, is changed as follows:

1. New or changed material is indicated by a vertical bar.
2. Added or revised illustrations are indicated by a vertical bar before figure number and figure title.
3. Remove and insert pages as indicated in the page list below.

| | |
|----------------|---------------|
| <i>Remove</i> | <i>Insert</i> |
| i and ii | i and ii |
| — | 9 through 14 |

4. File this change sheet in front of the publication for reference purposes.

By Order of the Secretaries of the Army, the Navy, and the Air Force:

BERNARD W. ROGERS
General, United States Army
Chief of Staff

Official:

J. C. PENNINGTON
Brigadier General, United States Army
The Adjutant General

EARL B. FOWLER
Rear Admiral, United States Navy
Commander, Naval Electronic
Systems Command

Official:

LEW ALLEN, JR General USAF
Chief of Staff

JAMES J. SHEPARD, Colonel, USAF
Director of Administration

DISTRIBUTION:

Active Army:

HISA (Ft Monmouth) (26)
USAINSCOM (2)
COE (1)
TSG (1)
USAARENBD (1)
DARCOM (1)
TRADOC (2)
OS Maj Comd (4)
TECOM (2)
USACC (4)
MDW (1)
Armies (2)
Corps (2)
Svc Colleges (1)
USASIGS (6)
USAAADS (2)
USAFAS (2)
USAARMS (2)
USAIS (2)
USAES (2)
USAICS (3)

MAAG (1)
USARMIS (1)
USAERDAA (1)
USAERDAW (1)
Fort Gordon (10)
Fort Huachuca (10)
Fort Carson (6)
Fort Gillem (10)
Ft Richardson (CERCOM Ofc) (2)
Army Dep (1) except
LBAD (14)
SAAD (30)
TOAD (14)
SHAD (3)
USA Dep (1)
Sig Sec USA Dep (1)
Units org under fol TOE:
(2 cys each unit)
29-297
29-610

ARNG & USAR: None
For explanation of abbreviations used, see AR 310-50.

TECHNICAL MANUAL
No. 11-5895-833-34P-5
TECHNICAL MANUAL
NAVELEX-0967-LP-550-1120
TECHNICAL ORDER
No. 31R5-2TSC54-114

DEPARTMENTS OF THE ARMY
THE NAVY, AND THE AIR FORCE
 WASHINGTON, DC 21 September 1977

**DIRECT SUPPORT AND GENERAL
 SUPPORT MAINTENANCE
 REPAIR PARTS AND SPECIAL
 TOOLS LISTS
 (INCLUDING DEPOT MAINTENANCE REPAIR
 PARTS AND SPECIAL TOOLS)
 FOR
 TEST TRANSLATOR
 (NSN 5895-01-017-7368)
 Current as of 15 April 1977**

REPORTING OF ERRORS

You can improve this manual by recommending improvements using DA Form 2028-2 located in the back of the manual. Simply tear out the self addressed form fill it out as shown on the sample, fold it where shown, and drop it in the mail.

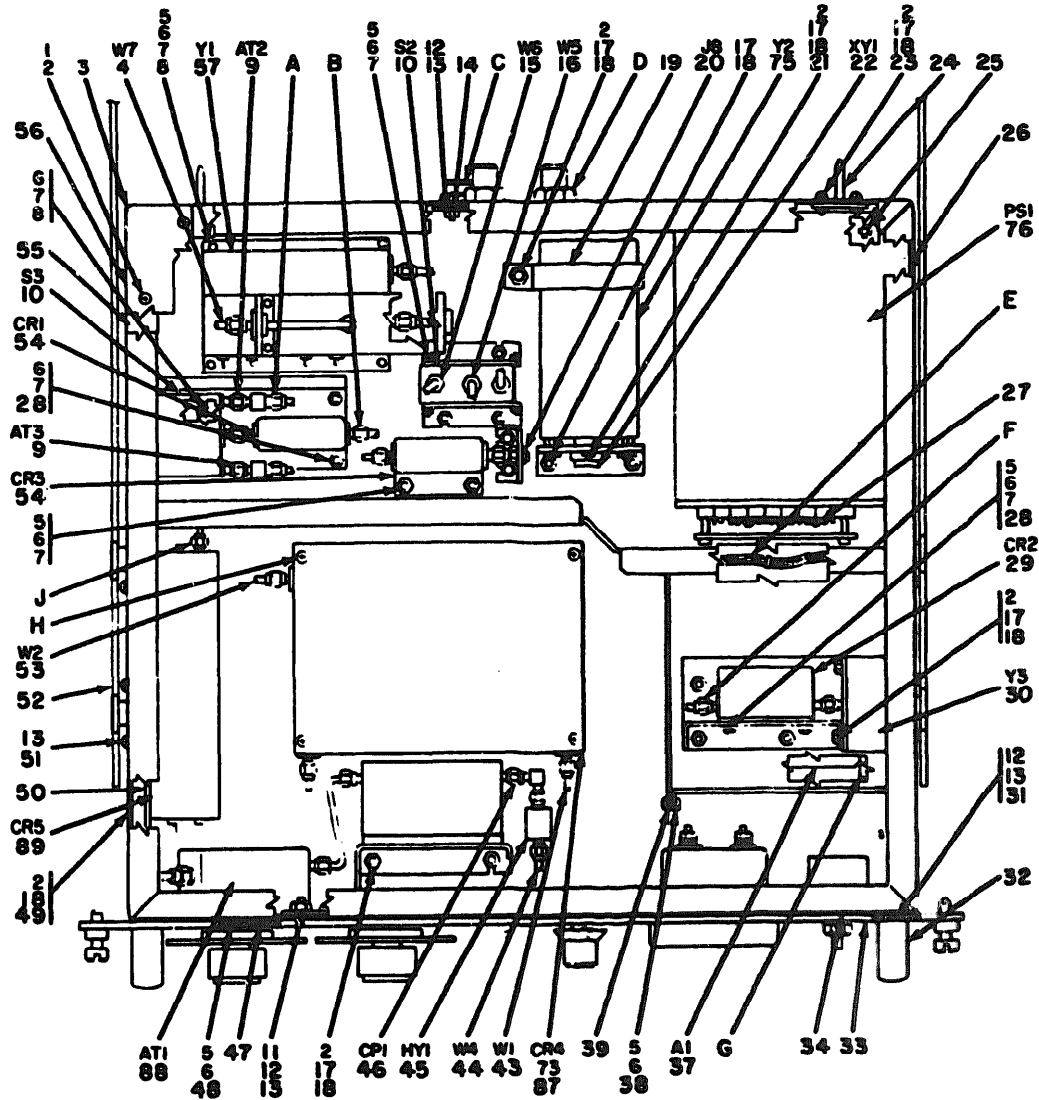
If there are no blank DA Form 2028-2 in the back of your manual, use the standard DA Form 2028 (Recommended Changes to Publications and Blank Forms) and forward to the Commander, US Army Communications and Electronics Materiel Readiness Command, ATTN: DRSEL-MA-Q, Fort Monmouth, New Jersey 07703.

For Air Force, submit AFTO Form 22 (Technical Order System Publication Improvement Report and Reply) in accordance with paragraph 6-5, Section VI, T.O. 00-5-1. Forward direct to prime ALC/MST.

For Navy, mail comments to the Commander, Naval Electronic Systems Command, Training and Publications Management Office, ELEX 04F3, P.O. Box 80337, San Diego, California 92138.

In either case a reply will be furnished direct to you.

| | Page | Illus | Figure |
|---|------|-------|--------|
| Section I. Introduction | 1 | | |
| II. Repair parts list | 5 | | |
| Group 03 Test translator | 9 | | 1 |
| 0310 Oscillator, radio frequency, phase locked (See next higher assembly) | | | |
| 0315 Cable assembly, radio frequency (See next higher assembly) | | | |
| 0320 Cable assembly, radio frequency (See next higher assembly) | | | |
| 0325 Cable assembly, radio frequency (See next higher assembly) | | | |
| 0330 Cable assembly, radio frequency (See next higher assembly) | | | |
| 0335 Oscillator, radio frequency, 5-MHz (See next higher assembly) | | | |
| 0340 Power supply (See next higher assembly) | | | |
| 0345 Wiring harness, special purpose (See next higher assembly) | | | |
| 0350 Cable assembly, radio frequency (See next higher assembly) | | | |
| 0355 Mixer, stage, frequency (See next higher assembly) | | | |
| 0360 Attenuator, variable (See next higher assembly) | | | |
| 0365 Multiplier, frequency, 200-MHz (See next higher assembly) | | | |
| 0370 Cable assembly, radio frequency (See next higher assembly) | | | |
| 0375 Panel assembly, front | 13 | | 2 |
| 0380 Cable assembly, status indicator calibrator | 14 | | 3 |
| Section III. Special tools list (Not applicable) | | | |
| IV. National stock number and part number index | 15 | | |



PREFIX ALL REFERENCE
 DESIGNATIONS WITH UNIT
 NUMBER AND SUBASSEMBLY
 DESIGNATION

EL5895-833-34P-5-TM-1 (1)

Figure 1. Test translator (sheet 1 of 4).

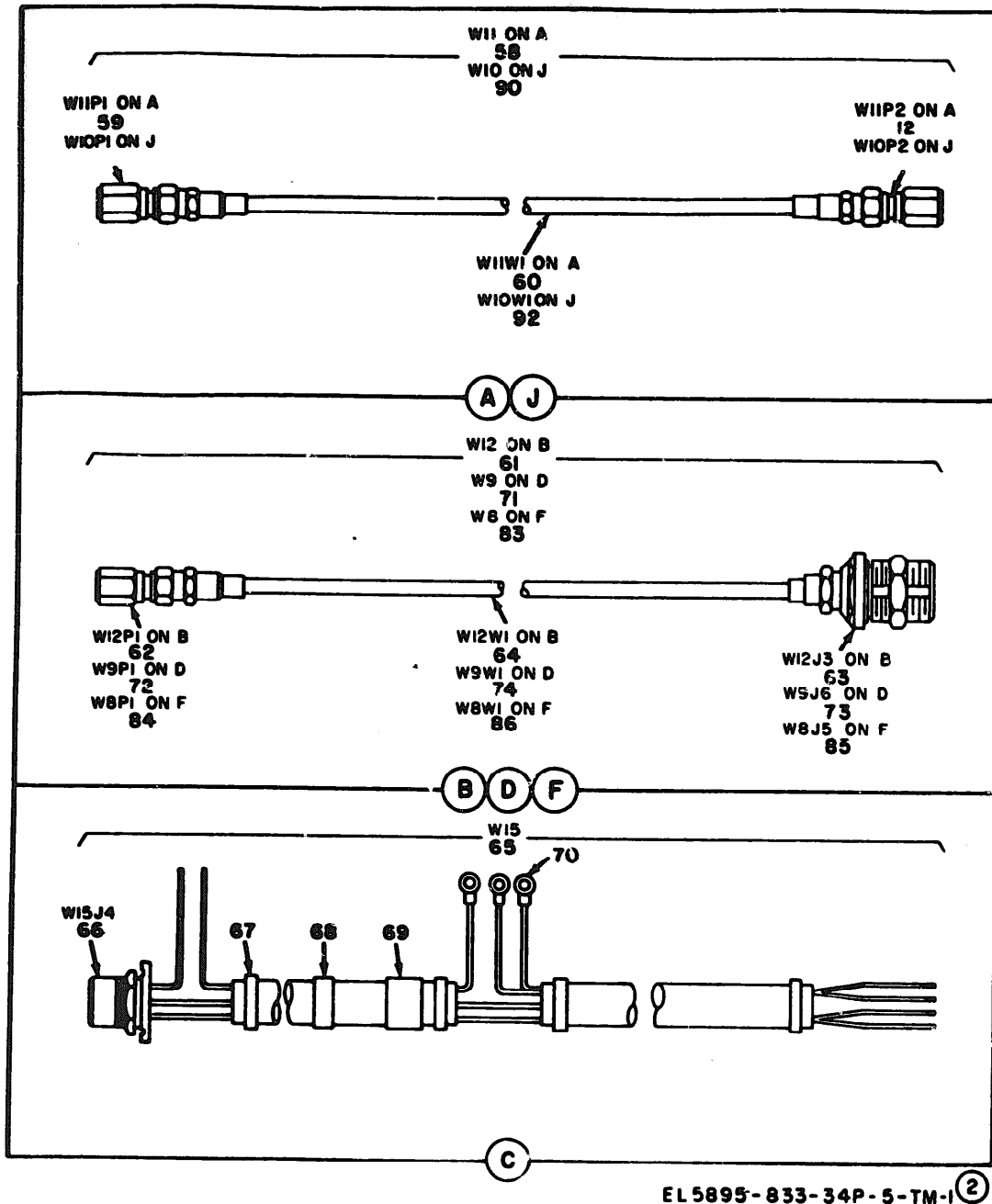


Figure 1. Test translator (sheet 2 of 4.)

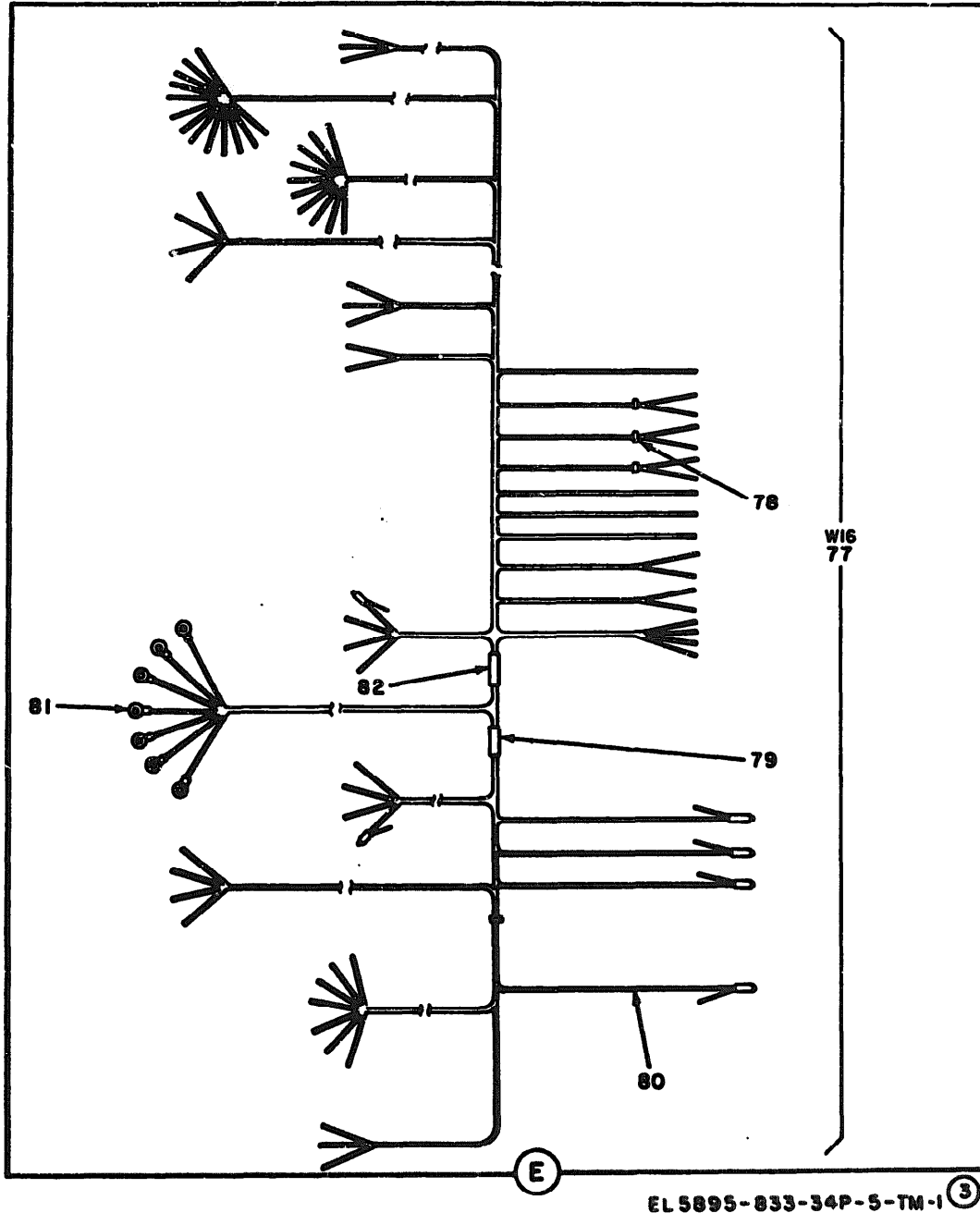
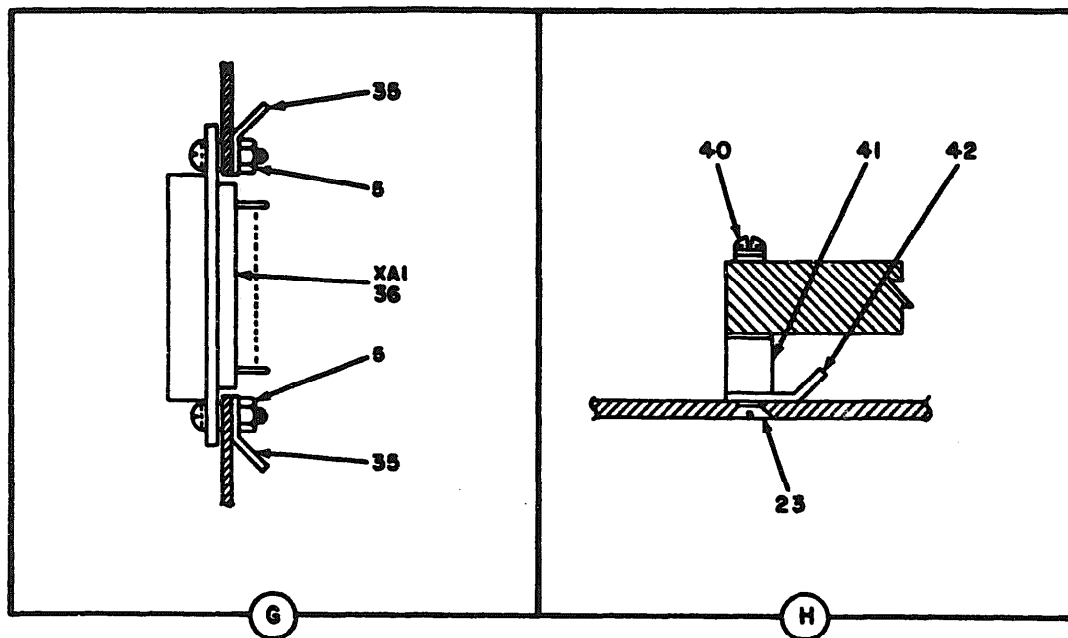
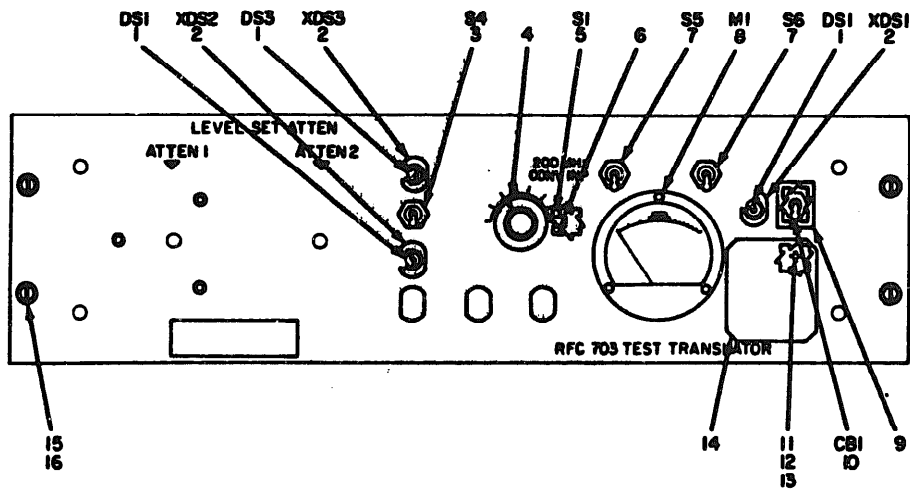


Figure 1. Test translator (sheet 3 of 4).



EL5895-833-34P-5-TM-1 (4)

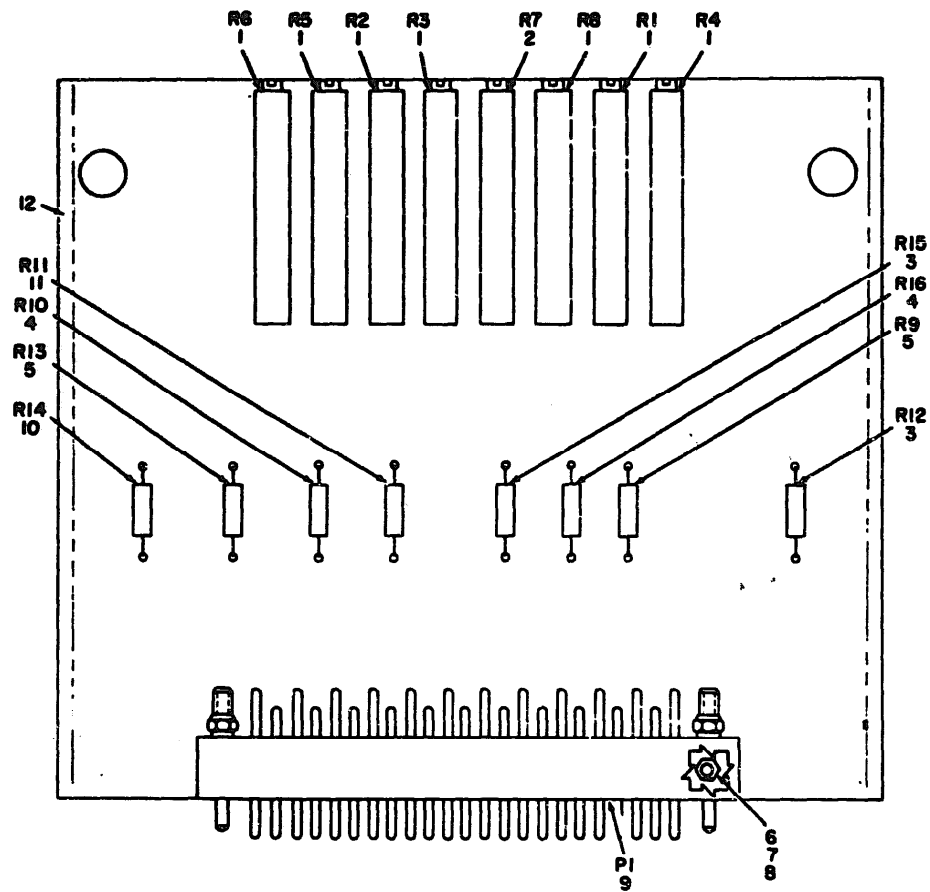
Figure 1. Test translator (sheet 4 of 4).



**PREFIX ALL REFERENCE DESIGNATIONS
 WITH UNIT NUMBER AND SUBASSEMBLY
 DESIGNATION.**

EL 5895-833-34P-5-TM-2

Figure 2. Panel assembly, front.



**PREFIX ALL REFERENCE DESIGNATION
WITH UNIT NUMBER AND SUBASSEMBLY
DESIGNATION.**

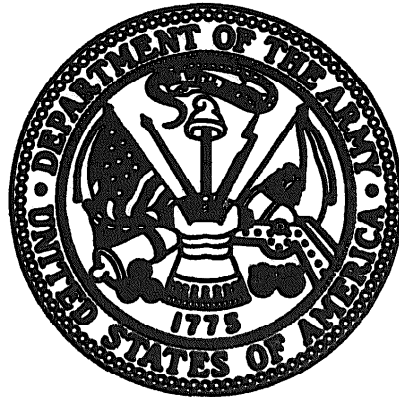
EL 5895-833-34P-5-TM-3

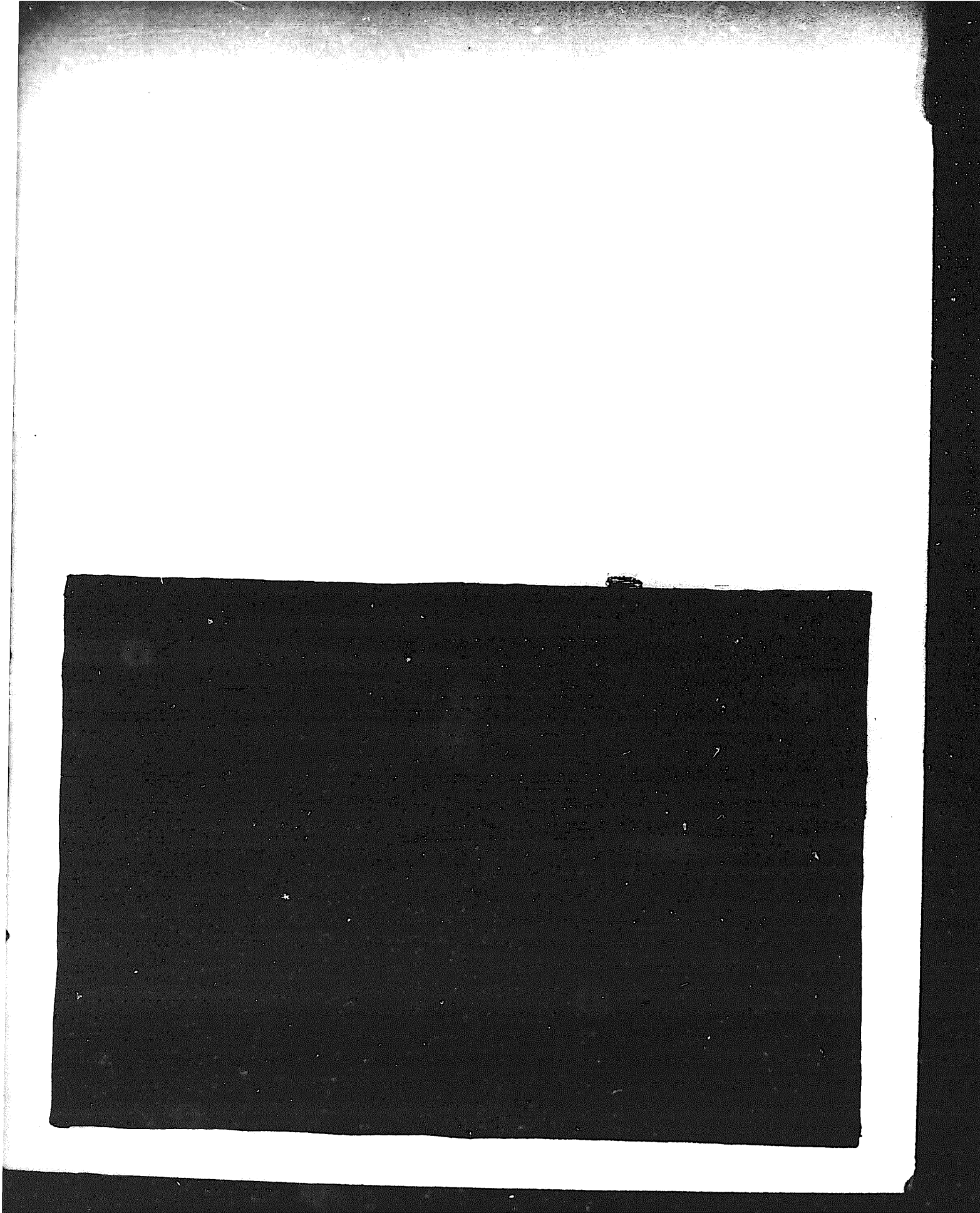
Figure 3. Circuit card assembly, status
indicator calibrator.

END

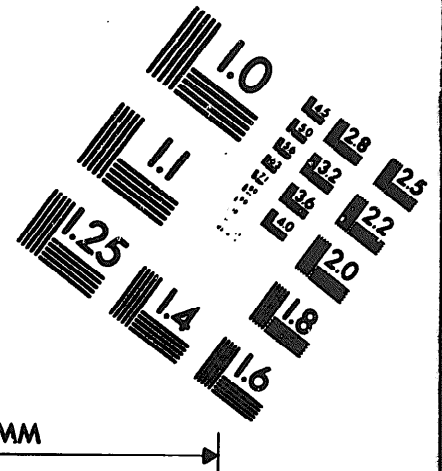
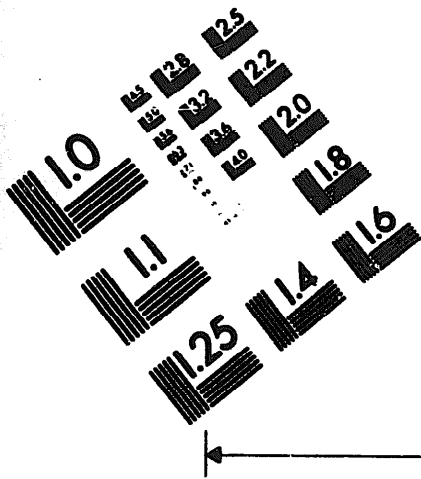
03-04-83

DATE





DEPARTMENT OF THE ARMY
MICROFORM
TEST TARGET



1.0 mm (e= .81 mm)

ABCDEFGHIJKLMN OPQRSTUVWXYZ 1234567890
abcdefghijklmnopqrstuvwxyz \$%& /%# 1/2 1/4 3/4 —=+ x&@*

1.5 mm (e= 1.09 mm)

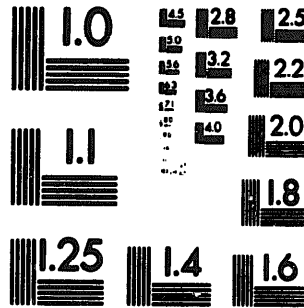
ABCDEFGHIJKLMN OPQRSTUVWXYZ 1234567890
abcdefghijklmnopqrstuvwxyz \$%& /%# 1/2 1/4 3/4 —=+ x&@*

2.0 mm (e= 1.37 mm)

ABCDEFGHIJKLMN OPQRSTUVWXYZ
abcdefghijklmnopqrstuvwxyz
1234567890 \$%& /%# 1/2 1/4 3/4 —=+ x&@*

2.5 mm (e= 1.77 mm)

ABCDEFGHIJKLMN OPQRSTUVWXYZ
abcdefghijklmnopqrstuvwxyz
1234567890 \$%& /%# 1/2 1/4 3/4 —=+ x&@*



1.0 mm (e= .81 mm)

ABCDEFGHIJKLMN OPQRSTUVWXYZ 1234567890
abcdefghijklmnopqrstuvwxyz \$%& /%# 1/2 1/4 3/4 —=+ x&@*

1.5 mm (e= 1.09 mm)

ABCDEFGHIJKLMN OPQRSTUVWXYZ 1234567890
abcdefghijklmnopqrstuvwxyz \$%& /%# 1/2 1/4 3/4 —=+ x&@*

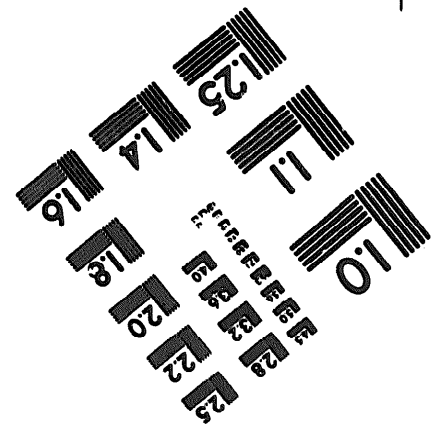
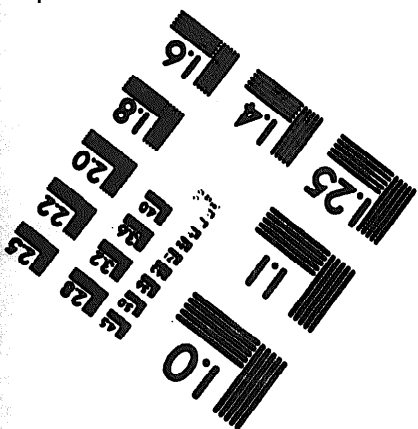
2.0 mm (e= 1.37 mm)

ABCDEFGHIJKLMN OPQRSTUVWXYZ
abcdefghijklmnopqrstuvwxyz
1234567890 \$%& /%# 1/2 1/4 3/4 —=+ x&@*

2.5 mm (e= 1.77 mm)

ABCDEFGHIJKLMN OPQRSTUVWXYZ
abcdefghijklmnopqrstuvwxyz
1234567890 \$%& /%# 1/2 1/4 3/4 —=+ x&@*

200 MM



250 MM